

FLUSH MOUNTED TRANSMITTER

... to control a SIMU-Hz Equipment from any switch

2 VERSIONS FOR 2 USES:

- RS version: to control a radio motor from a switch
- SEQ version: to control from a switch, in a sequential mode (ex. lighting)
- Cannot be used for end-limit setting.

| DESCRIPTION | REFERENCE |
|---------------------------------------------------|----------------|
| Micro-Transmitter Hz for roller shutter RS | 2008519 |
| Micro-Transmitter Hz for lighting SEQ | 2008518 |

Delivered with battery and 3 connection wires

FUNCTIONS AND PRODUCT BENEFITS

PRACTICAL, the micro-transmitter allows to transform any switch into a wireless control point. In this way, the user is free to choose the same brand and design of switch as the other electrical equipments of the house.

ULTRA COMPACT, it easily fits behind the switch, in the electrical box.

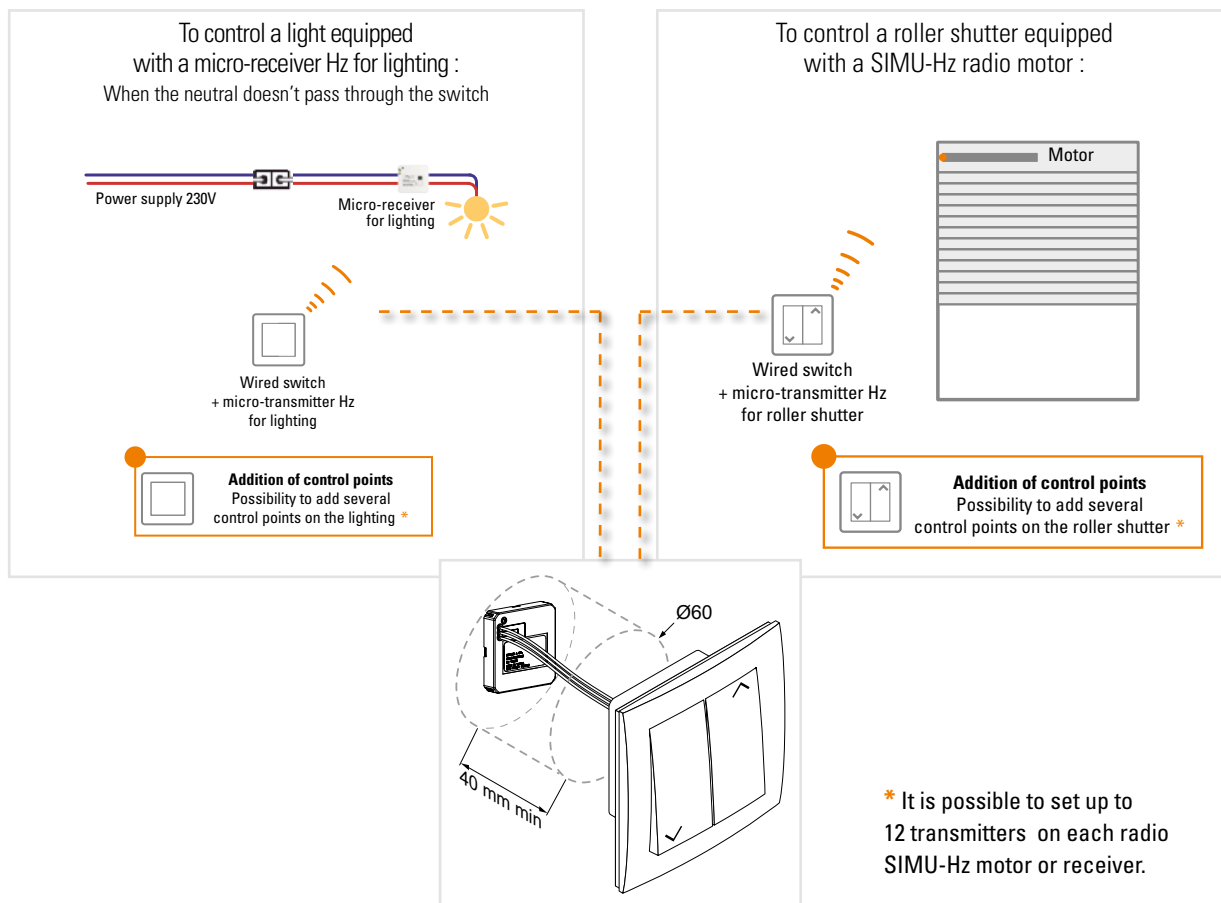
UNIVERSAL, it is compatible with any switch of the market (stable or unstable) and it keeps their operating mode.

LOW-VOLTAGE INSTALLATION, supplied with a 3v battery and directly connected to the switch.

NO WIRING REQUIRED, it is possible and easy to add one or several control points without making any hole or wireway, avoiding in this way any deterioration of inside walls.

BUILT-IN SIMU-Hz RADIO : the micro-transmitter is compatible with motors and receivers of the SIMU-Hz range.

INSTALLATION AND OPERATING PRINCIPLE



SPECIFICATION

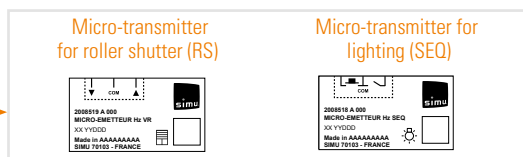
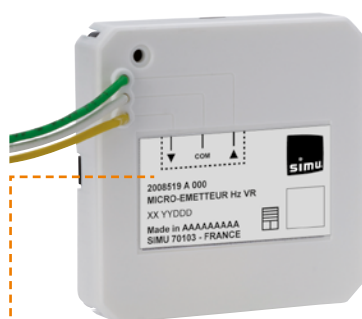
| | |
|-----------------------------------|-------------------------------------------------------------------------------------------------|
| CLASS | III |
| POWER SUPPLY | lithium type 3V CR2430 |
| AMBIENT TEMPERATURE OF USE | 0°C to +45°C |
| PRODUCT DIMENSIONS | 45 x 45 x 9 mm |
| PROTECTION INDEX | IP 30 |
| RADIO FREQUENCY | 433,42 MHz - radio SIMU-Hz |
| RANGE | 20 m through 2 reinforced concrete walls, depends on the environment and on the radio pollution |

RS VERSION :

| | |
|-----------------------------|------------------------------------------------------------------------|
| RADIO COMPATIBILITY | Compatible with the entire range of SIMU-Hz receivers and motors |
| SWITCH COMPATIBILITY | stable switch (Up / Down / Stop) unstable switch (Up / Down / Stop) |

SEQ VERSION:

| | |
|-----------------------------|---------------------------------------------------------------------------------------|
| RADIO COMPATIBILITY | Compatible with the micro-receiver for lighting and with SIMU-Hz receivers and motors |
| SWITCH COMPATIBILITY | switch (ON/OFF) push button (ON/OFF) |



Delivered with 3 connection wires to the switch.